

STOCKHOLM VASO SOSPESO LAS03.BI

CE EN 997:2015

GLOBO



Effetto antibatterico su ceramica
BATAFORM®
Ceramic antibacterial effect
BATAFORM®



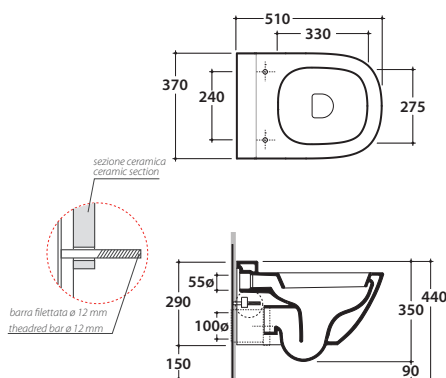
Bagno di Colore



Prodotto smaltato con
CERASLIDE®
Glazed product with
CERASLIDE®

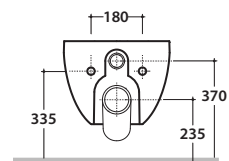


Scarico ottimizzato a 4/2,6 litri
Drain 4/2,6 lt



Cod. **LAS03.BI**

Vaso sospeso 51.37 h35 cm. Scarico 4 / 2,6 Lt. Completo di fissaggi. Peso 20 Kg
Wall-hung Wc 51.37 h35 cm. Drain 4/2,6 Lt. Fixing kit included. Weight 20 Kg



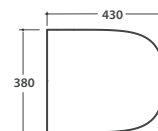
Copriwater con sistema di
cerniere a sgancio rapido
Seat-cover with hinge system
to quick release



Trattamento antibatterico per sedili in
versione bianco lucido
Antibacterial treatment on toilet seats
in shiny white

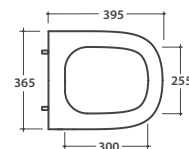
Cod. **LAR19BI**

Coprivaso rimovibile in duroplast con chiusura tradizionale. Peso 3,5 Kg
Removable duroplast seat-cover with traditional closing system. Weight 3,5 Kg



Cod. **LAR20BI**

Coprivaso rimovibile in duroplast con chiusura rallentata. Peso 3,5 Kg
Removable duroplast seat-cover with soft-closing system. Weight 3,5 Kg



Cod. **VA132**

Riduttore flusso di scarico.
Flow reductor.



Cod. **PU001**

Protezione antiurto e acustica.
Acoustic and crash protection.

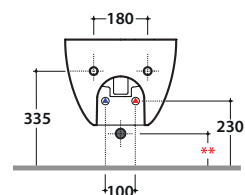
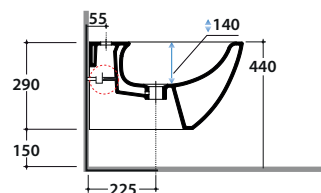
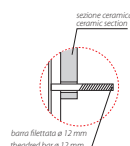
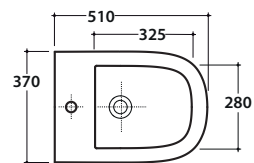


Cod. **FI002**

Staffa di fissaggio a "L". Peso 2,5 Kg
Fixing brackets for W/H sanitary. Weight 2,5 Kg

STOCKHOLM BIDET SOSPESO LAS10.BI

GLOBO



** Per installazione con / For installation with:
- Sifone a "S" / Siphon "S" - mm 140
- Sifone SF052 / Siphon SF052 - mm 120

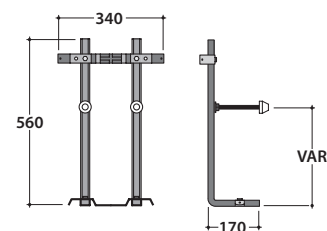
Cod. **LAS10.BI**

Bidet sospeso 51.37 h29 cm. Completo di fissaggi. Peso 18 Kg
Wall-hung bidet 51.37 h29 cm. Fixing kit included. Weight 18 Kg



Cod. **FI002**

Staffa di fissaggio a "L". (Barra filettata ø12). Peso 2,5 kg.
Fixing brackets for W/H sanitary. Threaded bar ø 12. Weight 2,5 kg.



Cod. **PU001**

Protezione antiurto e acustica. Peso 0,2 kg.
Acoustic and crash protection. Weight 0,2 kg.