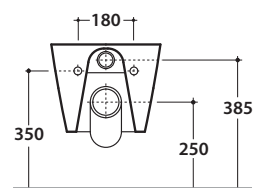
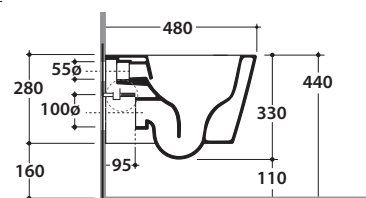
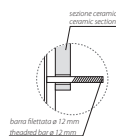
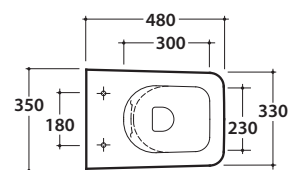


# INCANTHO VASO SOSPESO SENZABRIDA®

INS05.BI

CE EN 997:2015

# GLOBO



Effetto antibatterico su ceramica BATAFORM®  
Ceramic antibacterial effect BATAFORM®



Bagno di Colore



SENZABRIDA®



Prodotto smaltato con CERASLIDE®  
Glazed product with CERASLIDE®



Scarico ottimizzato a 4/2,6 litri  
Drain 4/2,6 l

Cod. **INS05.BI**

Vaso sospeso SENZABRIDA® 48.35 h 33 cm. Scarico 4 / 2,6 Lt. Completo di fissaggi. Peso 19 Kg  
Wall-hung Wc No rim 48.35 h 33 cm. Drain 4/2,6 Lt. Fixing kit included. Weight 19 Kg



Coprivaso con sistema di cerniere a sgancio rapido  
Seat-cover with hinge system to quick release



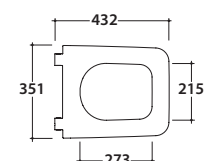
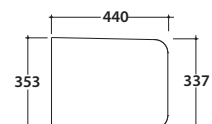
Trattamento antibatterico per sedili in versione bianco lucido  
Antibacterial treatment on toilet seats in shiny white

Cod. **IN021BI**

Coprivaso rimovibile in duroplast con chiusura tradizionale. Peso 2,5 Kg  
Removable duroplast seat-cover with traditional closing system. Weight 2,5 Kg

Cod. **IN022BI**

Coprivaso rimovibile in duroplast con chiusura rallentata. Peso 2,5 Kg  
Removable duroplast seat-cover with soft-closing system. Weight 2,5 Kg



Cod. **VA132**

Riduttore flusso di scarico.  
Flow reductor.



Cod. **PU001**

Protezione antiurto e acustica.  
Acoustic and crash protection.

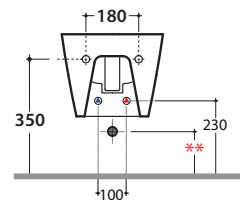
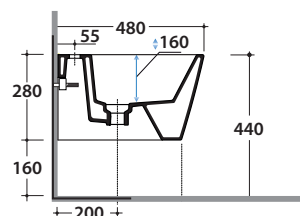
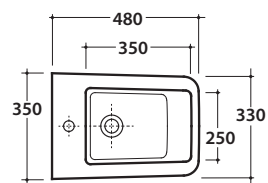


Cod. **FI002**

Staffa di fissaggio a "L". Peso 2,5 Kg  
Fixing brackets for W/H sanitary. Weight 2,5 Kg

# INCANTHO BIDET INS10.BI

# GLOBO



Cod. **INS10.BI**

Bidet sospeso 48.35 cm monoforo. Con sistema di fissaggio dal basso nascosto

Completo di fissaggi. Peso 28 Kg

Wall-hung bidet 48.35 cm. Provided with lower hidden fixing system

Fixing kit included. Weight 28 kg.

\*\* per installazione con / for installation with:  
-sifone a "S"/siphon "S": mm 140  
-sifone SF052/siphon SF052: mm 160



Cod. **FI012.BI**

Piletta up and down con tappo in ceramica

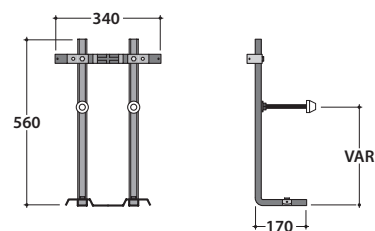
Click-clack drain in ceramic



Cod. **FI002**

Staffa di fissaggio a "L". Peso 2,5 kg.

Fixing brackets for W/H sanitary. Weight 2,5 kg.



Cod. **PU001**

Protezione antiurto e acustica. Peso 0,2 kg.

Acoustic and crash protection. Weight 0,2 kg.